

# Year 11

## Information Evening

HELSEBY

High School



## Overview of Evening

- **Year 11 Assessment and Reporting**
  - Summer 2024 GCSE and Vocational Examinations
  - Upcoming Pre-Public Examinations (PPEs)
  - Student Attainment and Progress
  - Key Dates for the academic year
- **Academic and Pastoral Support for students**
  - Intervention and Revision
  - Exam Preparation and Study Skills
  - Support Structures
- **Preparations for post-16 education, training and employment**

HELSEBY

High School



# Year 11

## Assessment & Reporting

HELBY

High School



### GCSE and Level 2 Vocational Qualifications for Summer 2024

- External examinations will take place in Summer 2024.
- Ofqual have stated:
  - All qualifications will be assessed in accordance with pre-pandemic specifications.
  - In 2023 grades were calculated to bring back in-line with pre-pandemic levels.
  - In 2024 we expect the grade profile to be similar to 2023.

HELBY

High School



## Pre-Public Examinations

- Students will complete formal assessments in each of their subjects.
- Assess students' attainment and progress.
- Identify students' strengths and areas for development.
- Plan targeted intervention and support for students.
- Develop students' examination techniques.

HELSEBY

High School



## Pre-Public Examinations

- Students issued with a PPE Timetable for the 2 week period from **Monday 6<sup>th</sup> November – Friday 17<sup>th</sup> November**.
- This details the number and duration of assessments that will be undertaken by each subject area and on what date and time.
- The PPEs will be conducted in a formal exam style setting to develop students' confidence, stamina and resilience for this type of assessment.
- This will be the format of their real GCSE examinations – examination practice is a key part of students' preparation.

HELSEBY

High School



## PPE Student Expectations

- Students should attend their PPEs promptly.
- Students should ensure they have all material and resources required, such as stationery and a calculator.
- Mobile phones must be switched off and placed in their bag.
- All watches and ear pods etc. are not permitted in the exam venue.
- Students must follow all instructions from the exam invigilator in relation to the administration of the PPE.

HELSBY

High School



## Access Arrangements

- Access Arrangements are for those students whose normal ways of working include such arrangements, for example a Reader, Scribe, Extra-Time etc.
- Students who are eligible for Access Arrangements will have these administered for these PPEs.

HELSBY

High School



## Student Absence & Contingency

- If a student does not attend their PPE due to illness or other absence, they may not be able to undertake this at a later date as it may compromise the integrity of the assessment. This will be considered on an individual basis.
- Alternative assessment evidence will be considered when generating a Predicted Grade for students who do not complete all of their PPEs.

HELSBY

High School



## Reporting Student Attainment and Progress

- **Predicted Grade** – our professional judgement of how a student will perform if they continue to work at the same rate of progress in that subject taking into account the different components of a qualification (e.g. Exam, Non-Examined Component, Practical Task etc.)

HELSBY

High School



## Reporting Student Attainment and Progress

- Year 11 Academic Progress Summary Report sent to parents/carers w/c **Monday 4<sup>th</sup> December.**
- **Parental Consultation Evening face-to-face on-site on Thursday 7<sup>th</sup> December.**

HELSEBY

High School



## Assessment and Reporting Dates for the diary

- Year 11 PPE 1: 6<sup>th</sup> November– 17<sup>th</sup> November
- Sixth Form Application Process starts – 27<sup>th</sup> November.
- Academic Progress Summary Report - w/c 4<sup>th</sup> December
- Parental Consultation Evening – 7<sup>th</sup> December
- Y11 into Sixth Form Information Evening – 1<sup>st</sup> February
- Year 11 PPE 2: 5<sup>th</sup> February – 16<sup>th</sup> February
- Academic Progress Summary Report – w/c 11<sup>th</sup> March
- Parental Consultation Evening – 21<sup>st</sup> March
- GCSE and Vocational Examinations  
Monday 13<sup>th</sup> May – Friday 21<sup>st</sup> June (Provisional)

HELSEBY

High School



# Academic & Pastoral Support for Students

HELBY

High School



## Progress and Pastoral Care Structure

- Support from Form Tutors, Pastoral Staff and Student Support Coordinator (SSC)
- Year 11 SSC Mrs Nixon  
[lnixon@helsbyhigh.org](mailto:lnixon@helsbyhigh.org)
- Progress and Pastoral Leader Mr Lawless  
[mlawless@helsbyhigh.org](mailto:mlawless@helsbyhigh.org)
- [year11admin@helsbyhigh.org](mailto:year11admin@helsbyhigh.org)

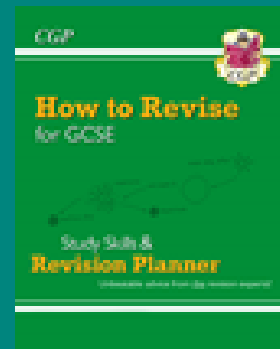
HELBY

High School



## Academic support

- Drop Everything and Read (DEAR) in Form Time
- Subject interventions
- Subject Revision
- Form Time Skills and Review
- Microsoft Teams
- ClassCharts
- Exams MADE Easy



HELSBY

High School



## Academic Support Intervention Vs Revision Classes

- Individual students will be invited to intervention sessions where a need has been identified.
- Revision classes will be offered to all students by teaching staff on key topics if and when appropriate.

**Both of the above will be coordinated by the curriculum Support and Pastoral Teams to ensure students attend the most appropriate support for them and their needs.**

HELSBY

High School





All students attended a two hour session to support their exam preparations.

### About this course

Everyone knows that to get the best possible marks in your forthcoming exams, you will need to remember what you've learnt – and to remember what you've learnt, you will need to revise. But few people seem to know how to revise. Do you know how to revise effectively? **Wherever you're at with revision, this course will show you how to:**

- Identify your strengths and weaknesses and prioritise areas for improvement
- Improve your memory skills
- Create effective revision resources
- Structure your time and work efficiently

Experiment with the techniques and practise those that really work for you. Go smash your revision and exams!

HELSEBY

High School



## PPE/GCSE Support Microsoft Teams

The screenshot shows the Microsoft Teams interface. On the left, a sidebar lists channels for 'Year 11 GCSE Support', including 'Home page', 'Use Feedback', 'Assignments', 'Quizzes', 'Notes', 'Ideas', and 'Channels'. The 'General' channel is selected. The main area displays a list of documents in the 'General' channel:

Document Name	Date
Home -	Updated -
Class Materials	
1 1st January Workshop Resources - Section	January 10
1 GCSE Admin Information	September 6, 2021
1 How to Revise - Exam Made Easy worksh...	January 10
1 Shared Word Exams Link here	January 10
1A 10 REVISION SESSIONS OF ESSENTIAL...	March 8
Art and Design	September 6, 2021
Biology	September 6, 2021
Business Studies	September 6, 2021
Chemistry	September 6, 2021
Computer Science	September 6, 2021

HELSEBY

High School



# Pastoral Support



HELSBY

Sixth Form



# Sixth Form Helsby

Valuing young voices to foster future achievements





# Preparations for post-16 education, training and employment



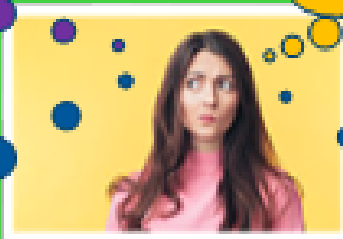
# Information, Advice & Guidance

Sixth Form

Apprenticeship

Employment

College





# Information, Advice & Guidance

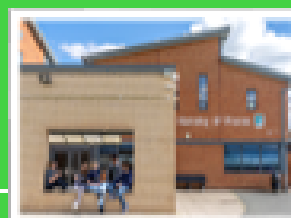
Individual Careers Guidance Meetings

A Level and Level 3 Vocational Subject Talks

College Talks

Apprenticeship Talks

Subject sampling



## *Why our Sixth Form?*

*We offer:*

- A wide range of academic and leadership opportunities
- A track record of success
- A comprehensive pastoral support programme
- Timetabled enrichment curriculum with diverse opportunities
- An innovative Network structure to support careers development
- Award winning careers guidance
- Independent careers advisors
- Over 30 courses at A-Level, BTEC Level 3 or equivalent
- The opportunity for talented students to study 4 A-Levels
- A track record of successfully supporting students' onwards progression, including to Oxbridge

---

# Transition to Sixth Form

Year 10/11 Open Evening 12<sup>th</sup> October

Subject Talks

Sixth Form Subject Taster Days

Sixth Form applications open in November

Personalised 1-2-1 Sixth Form interviews in January

Y11 into Sixth Form Information Evening in February

Microsoft Teams transition preparation materials and subject resources

Year 11 Induction Morning

---



## Introduction to New Courses

**Sociology**

**Psychology**

**Criminology**

**Further Maths**

**Politics**

**Core  
Maths**

**Certificate of Financial  
Studies**

**Extended Project  
Qualification**

**Economics**

---

HELSEBY

Sixth Form



# Sixth Form Helsby Community

Who are we?



## Progress and Pastoral Care



Sixth Form Administrator  
Mrs Cook  
[SixthFormAdmin@helsbyhigh.org](mailto:SixthFormAdmin@helsbyhigh.org)



Deputy Director of Sixth Form  
Mrs Robinson  
[JRobinson@helsbyhigh.org](mailto:JRobinson@helsbyhigh.org)



Sixth Form Study room  
supervisor and Attendance  
Mrs Houghton  
[houghton@helsbyhigh.org](mailto:houghton@helsbyhigh.org)



Director of Sixth Form  
Mrs Cross  
[KLindap@helsbyhigh.org](mailto:KLindap@helsbyhigh.org)

Personal Tutors / Teaching Staff



Sixth Form Student Support  
Mentor  
Ms Philips  
[rphilips@helsbyhigh.org](mailto:rphilips@helsbyhigh.org)

HELSEBY

Sixth Form





### University Destinations 2022





---

## We are...

Students who have achieved the grades to study with us

Students who are almost ready to move onto University, apprenticeships or the world of work

Progress Mentors who are specialists in the subject areas our students are interested in

Enrichment leaders who are offering experiences beyond the classroom

Teachers who offer 1:1 support

Parents who work closely with Sixth Form Helsby to support their children

Leaders who are passionate about working with young adults

...and maybe you



## Advice from our students and their parents/carers

### What we learnt as parents:

- Talk about ambitions and 'What's next?'
- Attendance & Revision sessions.
- Reassurance - ask school for help
- Structure at home inc Timetable
- Place to revise (free of distraction!!) 40 mins quality revision
  - flash cards
  - Online resources
  - practice papers
- Recall/ testing
- Rewards / bribes
- 'Can do' attitude

HELBY

High School



# Year 11

## Information Evening

HELBY

High School



